

## \* MORE DETAILS ON LIST OF ITEMS

*E-waste* includes televisions, computers and computer peripherals. We accept hand-held electronics, chargers, small household appliances etc.

*Used vegetable oil* is collected by Black Bear Biodiesel.

We accept *interior and exterior architectural coatings* in original containers, but cannot take spray paints, auto or marine paints.

*Beauty product packaging* includes makeup containers, lotions bottles/tubes, chapstick

tubes, deodorant containers, hair gel bottles/jars etc.

*Plastic lids* smaller than two inches or large lids without a recycling symbol will be collected at the ARCC. Lids that are commonly recyclable in your regular recycling include yogurt/cottage cheese containers, hummus tubs, and deli takeout containers.

*Energy bar wrappers* are foil-lined wrappers from granola bars, protein bars, diet bars, Clif Bars, Larabars, etc. Please, no candy/cookie wrappers.

## HOURS

**MONDAYS, WEDNESDAYS & FRIDAYS** noon–6 p.m.  
**THIRD SATURDAYS OF THE MONTH** 9 a.m.–1 p.m.

**COST \$5 PER CARLOAD** no matter how much or how little. **Tires:** \$3.00/\$4.00 on the rim; passenger vehicle tires only. **Ionized smoke alarms:** \$10. **Maple tubing:** fees by volume.

QUESTIONS? CALL US! 229-9383

If you have any questions during collection hours, call the ARCC directly: 476-1900.

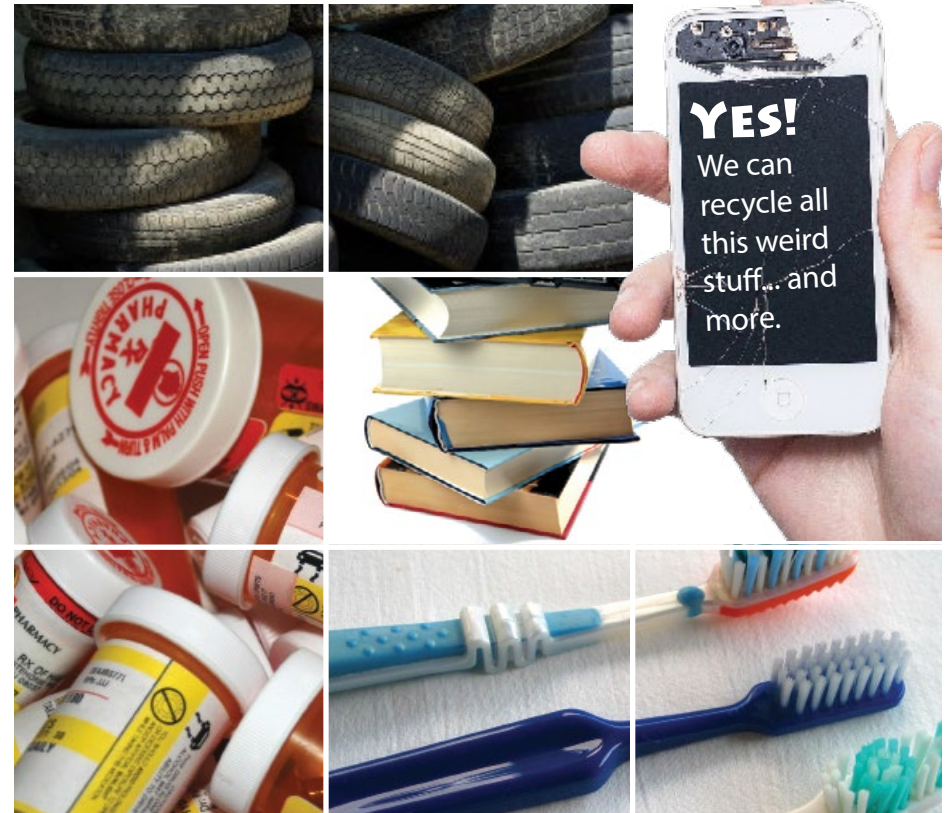
*Printed on 100% recycled paper*



# RECYCLE MORE AT THE ARCC

## ADDITIONAL RECYCLABLES COLLECTION CENTER

540 N. Main Street, Barre VT 05641  
(back of the building)



**CENTRAL VERMONT SOLID WASTE  
MANAGEMENT DISTRICT**  
229-9383 • CVSWMD.ORG

# Recycle more at the ARCC!

We encourage ARCC visitors to collect as much as possible before stopping in. Carpooling is encouraged. Visitors must sort their own materials.

## WHAT TO BRING TO THE ARCC:



### KITCHEN

- Air fresheners
- Baby food squeeze pouches
- Brita and Pur brand filters, pitchers & packaging
- Cereal bags
- Chip bags
- Corks
- Drink pouches
- Energy & Granola bar wrappers\*
- Food scraps & used food-grade oil\*
- Household cleaner packaging (spray triggers, pumps, detergent lids, etc)

- Plastic lids\*

\*Details of item on reverse



### HOUSEHOLD/ OTHER

- Books
- Cigarette waste, no cartons
- Clean, reusable clothing, linens & luggage
- Documents for shredding
- Fluorescent bulbs & CFLs
- Glasses & sunglasses
- Mercury thermostats & thermometers
- Packing materials (bubble wrap, peanuts, air pillows & mailers only)

**NEW: Ionized smoke alarms, \$10**



### BATHROOM

- Beauty product packaging\*
- Prescription pill bottles (lids on, labels off)
- Toothbrushes, empty toothpaste tubes, dental floss containers



### TECH

- Batteries, all kinds (tape tops and bottoms; bag large batteries)
- CDs, DVDs, floppy discs
- E-waste & electronics\*
- Ink & toner cartridges
- Video games/consoles
- Vinyl records
- Wires & cables



### SPORTS

- Shoes
- Tennis balls



### GARAGE & SHED

- Hand & power tools
- Household paints & stains\*
- Maple tubing (by appointment)
- Pellet stove bags (must be turned inside out and free of debris)
- Propane canisters, 1# & 20#
- Small metal (hardware, bottle caps, etc)
- Tires (\$3.00; \$4.00 on rim; auto & small truck tires only)

*Printed on 100% recycled paper*