



FOOD SCRAP MANAGEMENT FOR MULTI-UNIT HOUSING

A WEBINAR HOSTED BY THE CENTRAL VERMONT SOLID WASTE MANAGEMENT DISTRICT

Featuring presentations from:

Emma Stuhl, Department of Environmental Conservation

Carolyn Grodinsky, Grow Compost

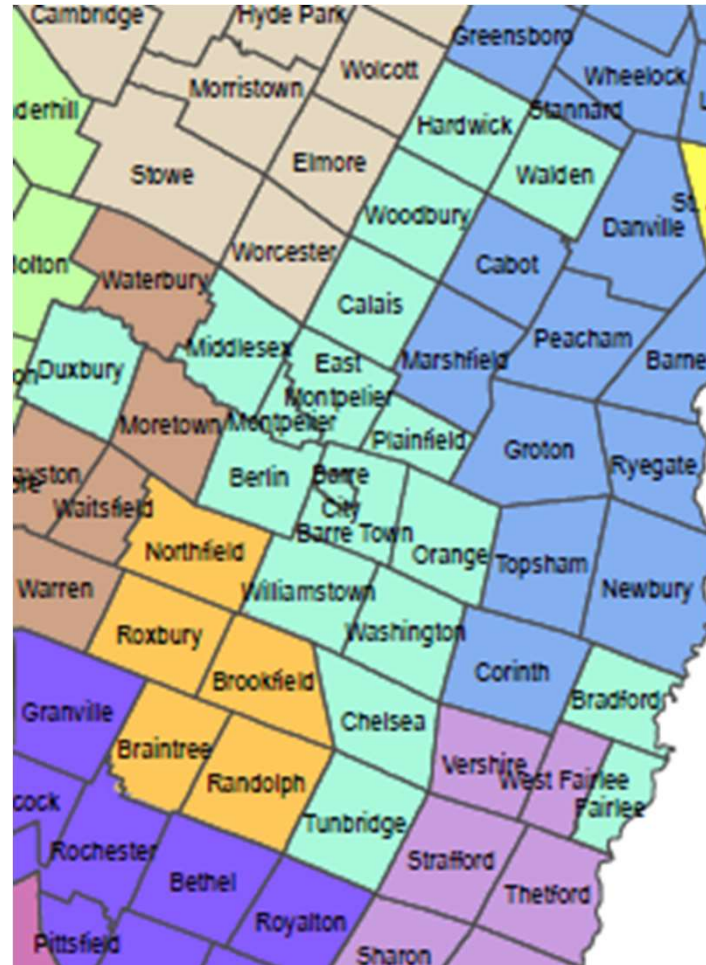
Catherine Klarich, Morningstar Properties

Cassandra Hemenway, CVSWMD

This material is based upon work supported under a grant by the Rural Utilities Service, United States Department of Agriculture. Any opinions, findings, and conclusions or recommendations expressed in this material are solely the responsibility of the authors and do not necessarily represent the official views of the Rural Utilities Service.

ABOUT CVSWMD

- 19-member-town municipality
- Outreach to residents & businesses
- Programming
 - School Program
 - Haz Waste Collections
 - ARCC Facility
- Housekeeping & Questions



Food Scrap Management at Rentals



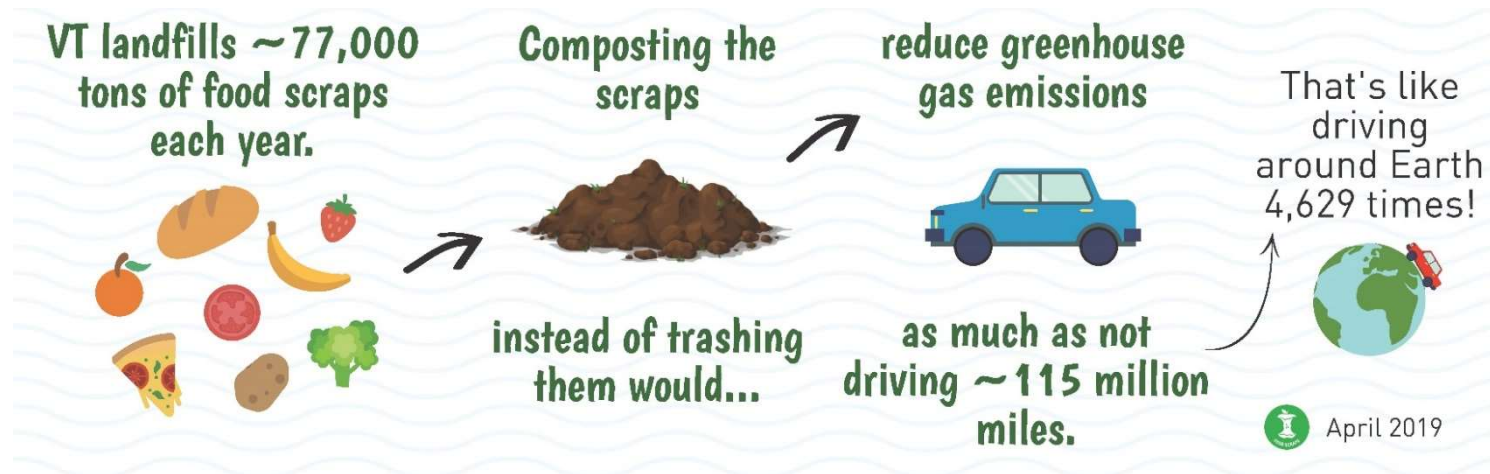
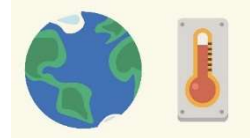
Emma.Stuhl@vermont.gov

802-622-4325



Why Food Scraps?

Reduce Greenhouse Gas Emissions



Compost
Restores Soil





Supports
Green Jobs



Reduces
need for
Landfills



Banned food scraps from the trash starting July 1, 2020.



Universal Recycling Law TIMELINE

- | | |
|------------------------|--|
| JULY 1
2014 | <ul style="list-style-type: none">Transfer stations must accept recyclablesFood scrap generators of 104 tons/year (2 tons/week) must divert material to any certified facility within 20 miles |
| JULY 1
2015 | <ul style="list-style-type: none">Statewide unit based pricing takes effect, requiring residential trash charges be based on volume or weightRecyclables are banned from the landfillTransfer stations/Bag-drop Haulers must accept leaf and yard debris seasonally (April 1 - December 15)Haulers must offer residential recycling collection at no separate chargePublic buildings must provide recycling containers alongside all trash containers in public spaces (exception for restrooms)Food scrap generators of 52 tons/year (1 ton/week) must divert material to any certified facility within 20 miles |
| JULY 1
2016 | <ul style="list-style-type: none">Leaf, yard, and clean wood debris are banned from the landfillFood scrap generators of 26 tons/year (1/2 ton/week) must divert material to any certified facility within 20 miles |
| JULY 1
2017 | <ul style="list-style-type: none">Transfer stations/Bag-drop Haulers must accept food scrapsFood scrap generators of 18 tons/year (1/3 ton/week) must divert material to any certified facility within 20 miles |
| JULY 1
2020 | <ul style="list-style-type: none">Food scraps are banned from the landfillHaulers must offer food scrap collection to nonresidential customers and apartment buildings with four or more residential units unless another hauler will provide that service |

For more information, visit VTrecycles.com.
July 2019



Vermont Department of Health, Rental Housing Health Code

Owner shall:

- assure arrangements are made for **removal**
- provide and maintain durable, water-tight **receptacles**

Options for Food Scraps:

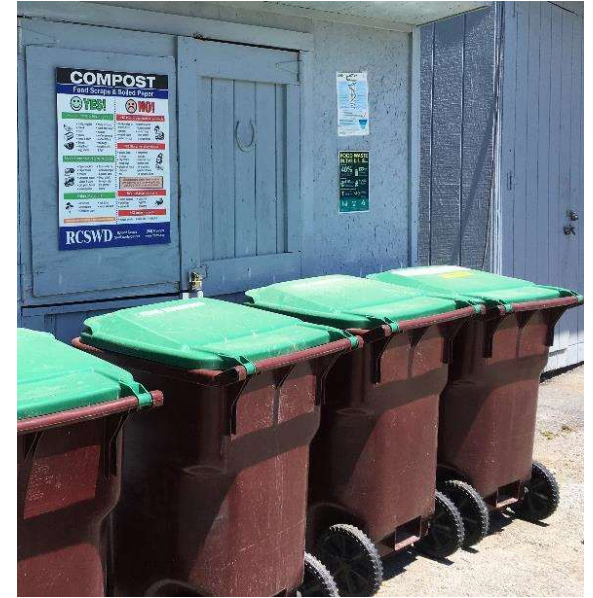
Pick-up



On-site



Drop-off



Composting in Bear Country

**Take Down
Birdfeeders**



**Use Durable
Containers
with Latches**



Cover Smells





August 2020

Universal Recycling Law | 802-828-1138

Managing Food Scrap Carts in Bear Country

It is possible to collect food scraps for a hauler without attracting nuisance bears.



Tips for bear-proofing food scrap totes:



- 1. Minimize odors.** Bears have a strong sense of smell. To contain odors, cover food scraps with a thick layer of sawdust, straw, or another smell-capping compostable material. Ask your hauler what material they recommend.
- 2. Keep things clean.** Ensure no food scraps spill on the ground or the outside of the tote.
- 3. Store food scrap totes where bears cannot access them.** If space allows, store totes in a shed, garage, or shipping container, and bring them outside immediately before pick-up. Consider at least bringing totes inside at night, when bears are most active.
- 4. Connect with neighbors.** Ask neighbors to only feed birds when there is a foot of snow or more and to follow VT Fish & Wildlife's [Living with Black Bears](#) advice (secure garbage and bird seed, feed pets indoors, surround bees & chickens with electric fences, etc.).
- 5. Keep totes away from forest edges.** Most bears do not like to cross open areas, like yards and parking lots. Keeping totes near buildings may deter bears.
- 6. Latch totes closed.** Locks, bungees, or other latches can keep bears (and other animals) out of totes. Make sure your hauler approves your latch system or undo latches for pick-up. These [instructions](#) explain how to install metal latches on plastic carts.
- 7. If outside, strap totes to a tree or pole so they are harder to tip over.** This will help the latches hold.
- 8. Surround totes with electric fencing.** Either top a wooden or chain-length fence with electric fencing or set up a ground-level electric fence. Consider baiting the electric lines with peanut butter or bacon grease; if a bear has a negative experience near your bin, it might be less likely to return.
- 9. Install a motion-sensor alarm and/or light.** Bears may be deterred by bright lights and/or alarms that go off as they approach a tote. Some are solar and/or battery powered so they can be installed anywhere.
- 10. Soak a rag in ammonia every 2-3 weeks.** Keep the smelly rag in a plastic tub next to the cart.
- 11. Train staff.** Make sure all staff know the importance of following good practices to avoid attracting bears and what to do if a bear is spotted.
- 12. If a bear is seen trying to get into a tote, try to scare it away** by banging pots together or shouting from a safe distance. If you are in a car, drive toward it (not too close!) slowly and blow the horn. Report all bear visits to VT Fish and Wildlife.



Contact VT Fish and Wildlife for more advice on deterring a bear **before** it becomes a problem. **Fill out this form to get in touch:** Anrweb.vt.gov/FWD/FW/WildlifeBearReport.aspx

VERMONT
AGENCY OF NATURAL RESOURCES
Department of Environmental Conservation

Learn more & get help!



Learn more VTrecycles.com



@VTrecycles



@TheVermontDEC

Emma.Stuhl@vermont.gov

802 622-4325





Diverting food scraps with Grow

- What we do
- Options for landlords and property managers
- Customizing/rightsizing your program
- Educating your tenants
- Maintaining your program



Grow Compost of Vermont - What we do



SOIL CHAMPIONS FOOD SCRAPS PROGRAM

WHAT CAN I COMPOST?

with Grow Compost



Goes in compost

All food! Including...

- ☑ Meat & Bones
- ☑ Dairy Products
- ☑ Fruit & Vegetables
- ☑ Condiments & Dressings
- ☑ Coffee Grounds/Filters
- ☑ Seafood & Shells
- ☑ Fats & Spices
- ☑ Soups (please strain)
- ☑ Bread & Pasta

"If it grows, it goes!"

Not for compost

- ✗ All Paper Products
- ✗ BioPlastics (PLA/PHA)
- ✗ Condiment Packets
- ✗ Straws/Containers
- ✗ Rubber Bands/Twist Ties
- ✗ PLU Stickers
- ✗ Packaging/Recyclables
- ✗ Dishware/Silverware
- ✗ Florist Flowers

Questions?
Call us!
802-882-8257



What happens to your food scraps

- We encourage partnerships with the Foodbank for redistribution to people in need,
- Bring to one of our two compost sites to create exceptional organic soils and
- Partner with an anaerobic digester to produce energy and farm products.



Create individualized customer programs



Grow Compost FOOD SCRAP RECYCLING TIPS



Food waste accounts for about a quarter of our trash. Starting July 1, 2020, Vermont banned the disposal of food scraps from the landfill. Thank you for choosing to recycle your food scraps with Grow Compost, helping to conserve landfill space and reduce greenhouse gas emissions. Grow Compost's Food Scrap Recycling Program turns your food scraps into poultry feed, organic soils, and renewable energy through anaerobic digestion.

Follow our guidelines to help keep your program clean and simple.

Inside Your Home



STORE YOUR SCRAPS Keep a container with a snug-fitting lid in your kitchen for your food scraps. Many of Vermont's solid waste districts sell kitchen-size compost containers. You can also buy them at your local hardware or similar store, or you can reuse a food-grade container (not a container that stored chemicals, etc). Food scraps can also be stored in your fridge or freezer in plastic bags.



EMPTY YOUR SCRAPS Empty your kitchen container into the Grow Compost tote at least once a week. During the summer months, empty your scraps just before your service day, to keep critters and odors at bay. Wash your container with soap each time you empty it.



WATCH YOUR TOTE Don't fill the Grow Compost tote more than three-quarters full to keep your program clean. If your tote is getting filled over three-quarters full, give us a call and we'll deliver another tote.

Summer Program Management

During the warmer months, Grow Compost provides a tote filled with a cover material called BioBlend to help keep your food scraps cleaner. After emptying your kitchen container of food scraps, scoop a small amount of BioBlend over your food scraps. Insects and odors are a natural component of the food decomposition process, but following some simple tips can help minimize their impact.

MORE WARM WEATHER TIPS (a time to pay extra attention to your food scrap recycling program):



1. Store the Grow Compost tote in a shady location or inside, out of direct sunlight.



2. Keep your food scraps in the fridge or freezer before transferring them to the Grow Compost tote.



3. Deposit food scraps into the Grow Compost tote the day before your scheduled service day.



4. Do not spill on the rim, lid, or ground — keep the tote and surrounding area clean and dry.



5. Top off your food scraps with a scoop or two of BioBlend Cover Material.



6. Wash your kitchen food scrap container with soap each time you empty it.

Benefits of Grow Compost collection:

- Easy to implement, clean, dependable,
- Provide training materials and feedback to keep program running smoothly,
- Reduce your trash and depending on size of housing complex, can provide an opportunity to reduce trash costs,
- Clean up trash area (think less smell or critters),
- Environmental benefits – compost, reduced GGE, and extending life of Vermont's only landfill!





Questions??

Carolyn Grodinsky, Accounts Manager
Grow Compost of Vermont
802-595-2333



EXAMPLES OF IMPLEMENTING FOOD SCRAP SYSTEMS FOR RESIDENTS

Catherine Klarich
Property Manager
Morningstar Properties
cklarich@morningstarpropertiesvt.com





SOILSAVER

CLASSIC COMPOSTER™ COMPOSTEUR CLASSIC™

So strong and durable, it's the last one you will ever need!
Si robuste et durable que vous n'aurez plus jamais besoin d'un autre composteur!

- Finished compost is nature's own fertilizer and soil conditioner.
Le compost fini est un engrais et un conditionneur de sol créé par dame nature elle-même.

- Convenient lock-top is easily removed to add kitchen and garden waste.
Couvercle à enclenche pratique facile à retirer pour ajouter les résidus de cuisine et de jardin.

- Two slide-up doors for easy removal of compost.
Deux portes coulissantes facilitent l'extraction du compost.

- Self watering lid feature.
Couvercle à arrosage automatique.



Made from
recycled plastic
100%
Exclusivement fait
de plastique recyclé



Included is our FREE COMPOSTING GUIDE
Vous trouverez ci-joint notre GUIDE DE COMPOSTAGE GRATUIT
Size: Assembled 20" W x 20" D x 20" H
Size: Assembled 20" W x 20" D x 20" H



FOOD SCRAP DROP-OFF

YES! These go in the bin.

(No plastic bags or containers, please)

- Fruits and vegetables (No PLU stickers!)
- Eggs and eggshells
- Milk, cheese and other dairy
- Meat and bones
- Shells and fish
- Dressing and condiments
- Sauces and soups
- Bread, pasta and pastries
- Nuts (including shells)
- Spices, oils and butter
- Coffee grounds and filters
- Tea bags



KEEP OUT

Paper products • Packaging & containers

Florist flowers • PLU stickers • Rubber bands & twist ties • Plastic bags



CENTRAL VERMONT SOLID WASTE MANAGEMENT DISTRICT
802.229.9383 • CVSWMD.ORG • COMMENTS@CVSWMD.ORG

FOOD SCRAP DROP-OFF

FOOD SCRAP DROP-OFF locations (regardless of residency):
197 Main St., corner of Loomis
Maple Lane next to "Quonset Hut" across from the Co-op
99 Barre St. next to trash room

**Please read the VT Compost Co. sign carefully
and follow their instructions.**

We will be providing residents with a lidded bucket
for collecting scraps inside your unit.



COMPOST BIN



Around the Corner

CVSWMD PROPERTY MANAGERS SUPPORT

November 12, 2020

Cassandra Hemenway
Outreach Manager
cassandrah@cvswmd.org



HOW CAN CVSWMD HELP PROPERTY MANAGERS

- CVSWMD can train tenants
- Provide signage (we design, you print & laminate)
- Provide free review of your systems and consultation
- Assist with system improvements in food scrap, recycling or trash
- Provide information and resources



TRAINING TENANTS

- Pre-Covid: on-site trainings in community rooms or outdoors
- Post-Covid- virtual trainings
- Signage
- In some cases: provide equipment such as:
 - recycling bins
 - Food scrap pails



SIGNAGE & CONSULTATION

- Download free signs at cvswmd.org/landlords
- Contact us for ideas, review and consultation.
- We can:
 - Help improve trash, recycling, food scraps systems
 - Connect you with resources
 - Keep you current on state and local requirements related to solid waste management.



SPECIAL ASSISTANCE FOR BARRE CITY PROPERTIES

For this year only we have:

- Free backyard compost equipment for 2 – 6 units
- Free help setting up onsite composting for 6 – 20 units
- Assistance with hauling fees for 1st 2 months
- Support having an enclosure built for large multi-unit sites
- Free training for tenants, management and staff
- Apply at cvswmd.org/barre-city-landlord-assistance

QUESTIONS?

Cassandra Hemenway
Outreach Manager
CVSWMD
802-229-9383 x102
cassandrah@cvswmd.org



Helpful Links:

Landlord Guidance:
cvswmd.org/landlords

Barre City Application for
Assistance:

cvswmd.org/barre-city-landlord-assistance



QUESTIONS?

Cassandra Hemenway | Central Vermont Solid Waste Management District | cassandrah@cvswmd.org

Emma Stuhl | Vermont Department of Environmental Conservation | Emma.Stuhl@vermont.gov

Carolyn Grodinsky | Grow Compost | carolyn@growcompost.com

Cat Klarich | Morningstar Properties | cklarich@morningstarpropertiesvt.com